

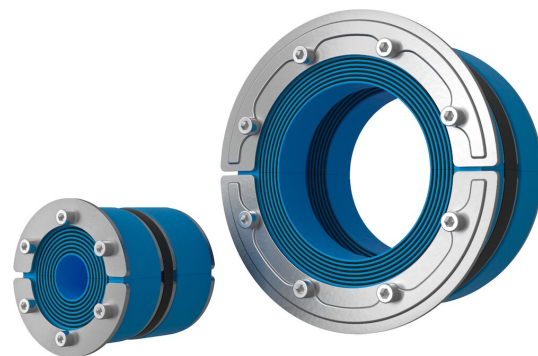


Roxtec RS PPS/S-tætning

Tætning af letvægtsplastrør til montering på én side.

Roxtec RS PPS/S er en tætning til åbninger med plastrør i brandklassificerede områder som ståldæk og skotter. Tætningen sikrer fuld blokering af røg, flammer og vand i tilfælde af brand og er godkendt til montering på én side. Gennemføringen kan tilpasses rør af forskellig størrelse ved hjælp af aftagelige lag. Til plastrør på op til 119 mm.

- Letvægt
- Hurtig og nem at montere
- Kan tilpasses til kabler og rør af forskellig størrelse



Produktegenskaber



Brandklassificeret



Vandtæt



Gastæt

Byggekonstruktion



Metal



Beton

Monteringstype



Eksisterende åbning



Oprindeligt sleeve

Normeringer og certifikater

Brand

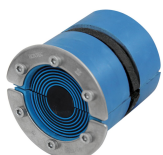
- A-KLASSE i henhold til IMO 2010 FTP-kode
- E/EI-klassificering i henhold til EN 45545 E60

Tæthed

- Gas: 2 bar (katastrofe)
- Vand: 4 bar (katastrofe)

Data om tætningskomponenter

Tætningskomponenter



RS PPS/S-tætning



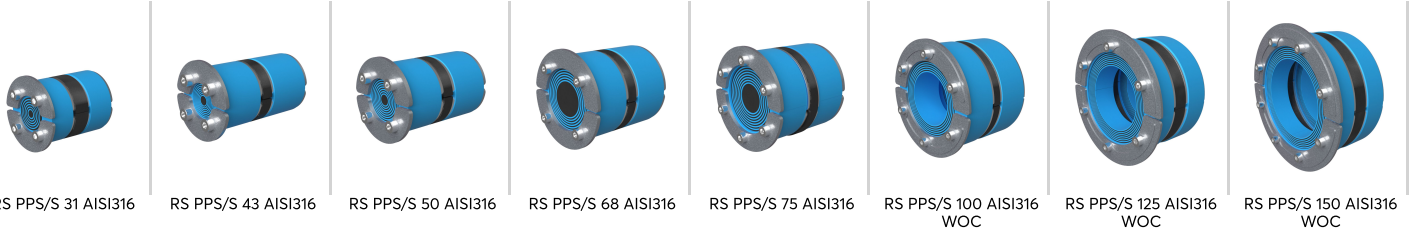
Lubrikant

For mere information, besøg venligst [roxtec.com](https://www.roxtec.com).



Foreslåede tætningskit

mm/kg



Title	Konfiguration	Åbningsmål Ø	Vægt	Art.-nr.
RS PPS/S 31 AISI316	1x (4.0-17.0)	31 - 32	0.09	PPSS000003121
RS PPS/S 43 AISI316	1x (4.0-23.0)	43 - 45	0.29	PPSS000004321
RS PPS/S 50 AISI316	1x (8.0-30.0)	50 - 52	0.37	PPSS000005021
RS PPS/S 68 AISI316	1x (26.0-48.0)	68 - 70	0.6	PPSS000006821
RS PPS/S 75 AISI316	1x (24.0-54.0)	75 - 77	0.6	PPSS000007521
RS PPS/S 100 AISI316 WOC	1x (48.0-70.0)	100 - 102	0.8	PPSS000010021
RS PPS/S 125 AISI316 WOC	1x (66.0-98.0)	125 - 127	1.4	PPSS000012521
RS PPS/S 150 AISI316 WOC	1x (93.0-119.0)	150 - 152	1.6	PPSS000015021

The product information provided by Roxtec does not release the purchaser of the Roxtec system, or part thereof, from the obligation to independently determine the suitability of the products for the intended process, installation and/or use. Roxtec gives no guarantee for the Roxtec system or any part thereof and assumes no liability for any loss or damage whatsoever, whether direct, indirect, consequential, loss of profit or otherwise, occurred or caused by the Roxtec systems or installations containing components not manufactured by an authorized manufacturer and/or occurred or caused by the use of the Roxtec system in a manner or for an application other than for which the Roxtec system was designed or intended. Roxtec expressly excludes any implied warranties of merchantability and fitness for a particular purpose and all other express or implied representations and warranties provided by statute or common law. User determines suitability of the Roxtec system for intended use and assumes all risk and liability in connection therewith. In no event shall Roxtec be liable for indirect, consequential, punitive, special, exemplary or incidental damages or losses. The Roxtec products are offered and sold in accordance with the conditions of the Roxtec General Terms of Sales. The latest version of the Roxtec General Terms of Sales can be downloaded from <https://www.roxtec.com/en/about-us/about-roxtec/general-terms-of-sales/> We reserve the right to make changes to the product and technical information without further notice. Any errors in print or entry are no claims for indemnity. The content of this publication is the property of Roxtec International AB and is protected by copyright. This document was generated on: 2024-04-06